



Agenda for second part

- ▶ **AZOR** GSM mini alarm
- ▶ **EYE-02** GSM security camera
- ▶ **GD-04 David** GSM dialer
- ▶ **CA-1803 Athos** GSM/GPRS/GPS car alarm system



AZOR – easy solution

JABLOTRON
CREATING ALARMS

GSM mini alarm Azor





Common alarm system = STRESSFUL

- ▶ Your home is changing to „PROTECTED PREMISES“
- ▶ Complicated controlling = **problem**
- ▶ Non sense beeping and blinking = **problem**
- ▶ If I make mistake = **problem**
 - ▶ Siren, SMS reports, ARC dispatch...

*ALARM is screaming to everybody:
„I am not able operate alarm system !!!“*

Mrs. Smith hates their alarm system. She doesn't like using it.





AZOR = PIECE IN YOUR MIND

- ▶ Simple
- ▶ Easy to understand

*Do you know switch on light..?
Than you know how to operate AZOR...*

2 main orders: Guard and Stay...





AZOR = easy communication

- ▶ Voice menu
- ▶ Confirmation of your selection

„Welcome, your system is DISARMED,

Press button for:

- 1** ARMING
- 2** sending information SMS
- 3** remote listening...“

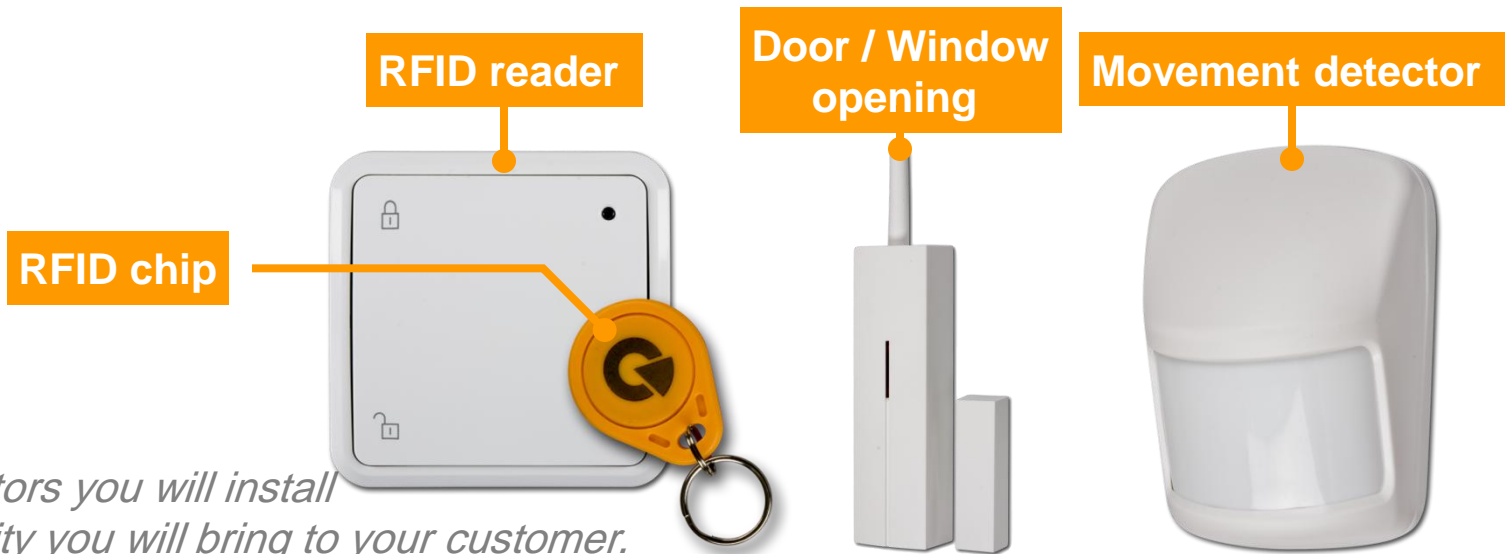


Azor is listening to you – try it at (local telephone number)



AZOR = pre enrolled kit

- ▶ Ready to be installed and used
- ▶ Offers most typical setting
- ▶ Easy to expand



*More detectors you will install
more security you will bring to your customer.*



AZOR is wireless

1 control unit



2 doors



3 movement



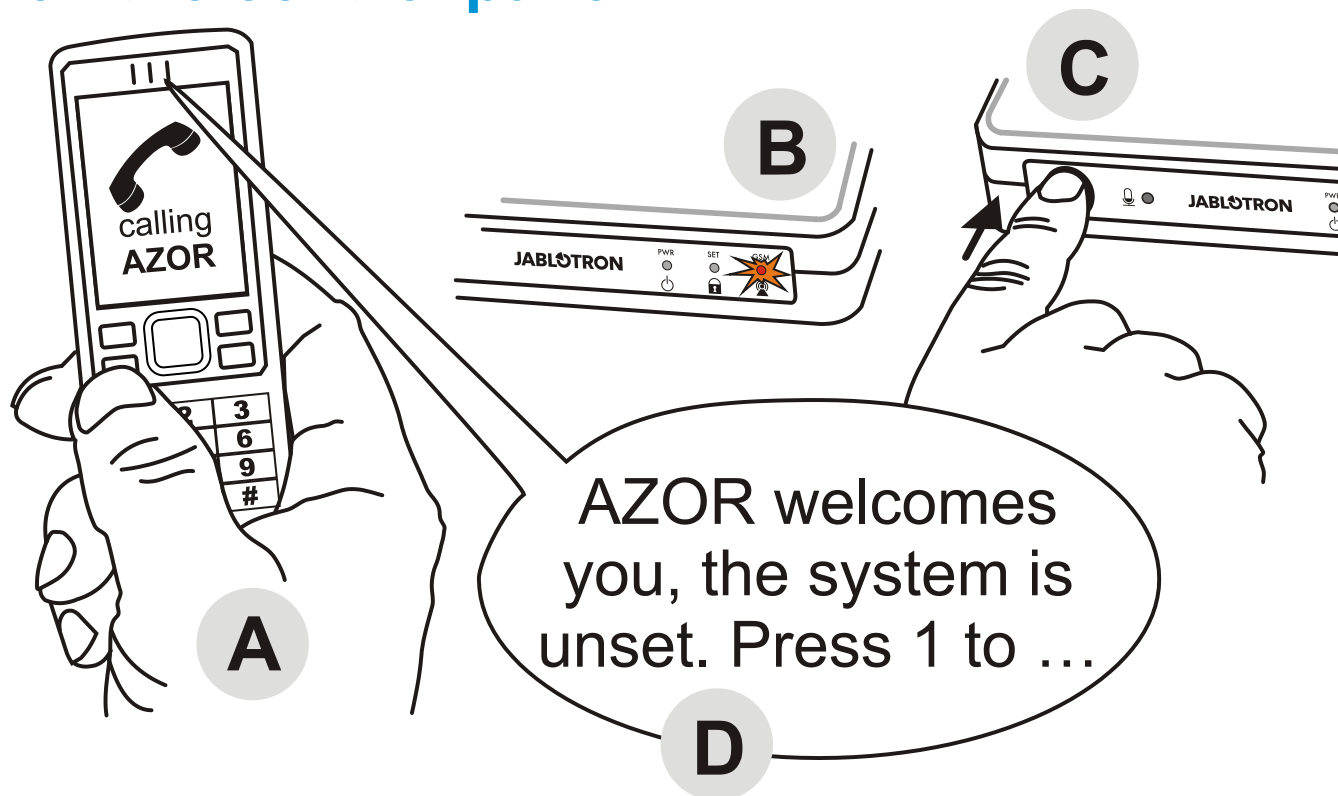
4 control



Ready, steady and the installation is completed. In the installation first check coverage than attached devices.



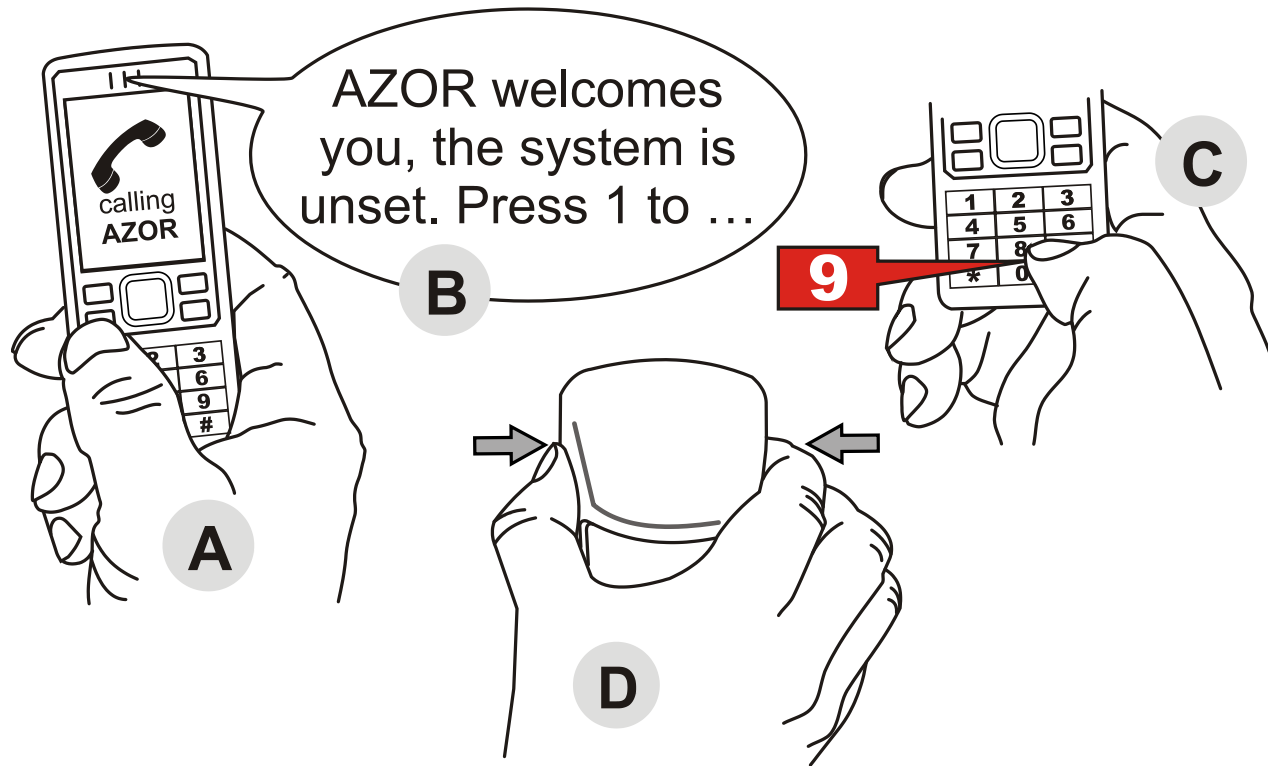
1. Telephone is assigned after calling in and pressing button on the control panel



Language will set up by the origin of first telephone number. It can be changed at any time by SMS.



Communication test – in the voice menu by pressing # 9



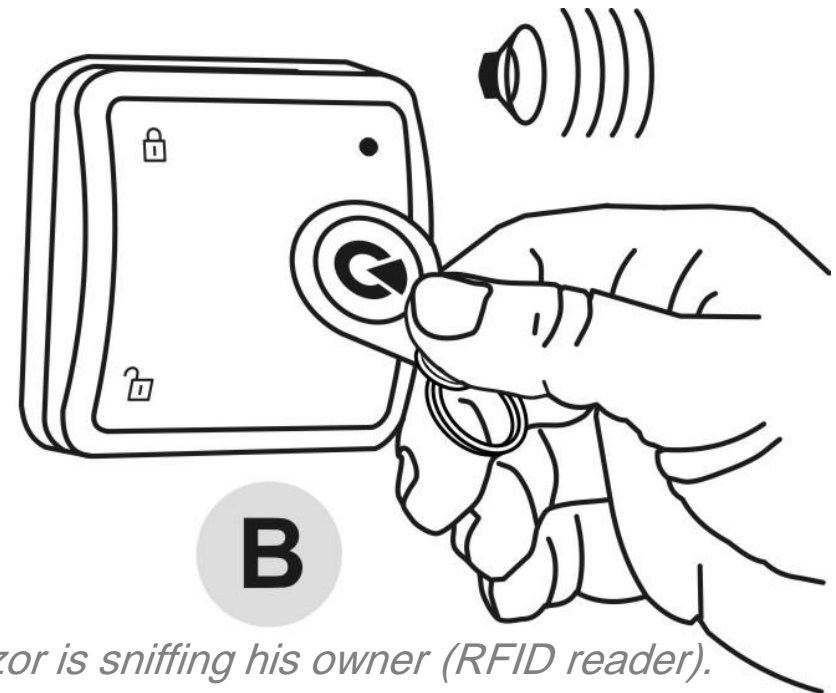
Example: communication test

Suggestions: you can test the coverage by remote controller from any location in the premises.



Controlling „switch ON/OFF“

 Disarmed
 Armed



*It is easy, like when you control light switch. Azor is sniffing his owner (RFID reader).
Pressing of the controller – reports status of alarm system.
And system is installed...*



Main description

- ▶ Up to 10 detectors + 1 RFID reader + 1 door bell
- ▶ Up to 10 users (phone number, controlling RFID chip, remote controller, access code – voice menu)
- ▶ Back-up power supply in the control unit (standby time up to 12 hours)
- ▶ Detectors powered by alkaline batteries (lifetime 1 year – low bat is reported)
- ▶ Coded radio protocol
 - ▶ Coverage up to 100 meters (open area), 20 m in the building
 - ▶ Each detector registered by unique code
- ▶ Automatic communication test
- ▶ Security grade 1 by EN-50131-1

GSM network = it is a must for AZOR





User features

- ▶ ALARM
 - ▶ Siren
 - ▶ Alarm Receiving Center
 - ▶ SMS
 - ▶ Call
- ▶ Informative SMS (requested from voice menu)
 - ▶ Actual status, last event report
 - ▶ Voltage status, GSM signal level, Registration code
- ▶ Listening IN
- ▶ PC setup



Voice menu and reporting is possible to change according user's needs.



Basic features

- ▶ Voice menu accessible only from enrolled phone numbers (a code can be set as well)
- ▶ Limit of alarms (3 times and stop)
- ▶ Tamper limitation (once and stop)
- ▶ Exit delay for all the detectors
 - ▶ RFID reader or the Control Unit is beeping (remote arming)
- ▶ Warning on building entry can be set
- ▶ Unknown SMSes are sent to first phone number
- ▶ Detectors and pits are not compatible with JA-60 and JA-80 line



Non-compatible – different protocol and coding



Remote control AZ-10R

- ▶ Arming / Disarming / Panic



Door-bell button AZ-10B

- ▶ Possible to select the melody



Optical smoke detector AZ-10S

- ▶ Reacts on smoke or on increased temperature





Setting via computer

- ▶ Connect the USB cable
- ▶ Switch-on **A-Link** software
- ▶ Setting of features and functions
 - ▶ Bubble clue



*No installation – Azor is working as a separated US
No manual – bubble clue.*



Why Azor?

- ▶ Ideal for small buildings with lower risk
- ▶ Cheaper solution
- ▶ Easy to operate
- ▶ Faster installation
- ▶ Easy setting from the computer
- ▶ Basic, but professional solution



On the market from June/July 2011.



2 kit's sizes

▶ AZK START

- ▶ 1x GSM Control Unit
- ▶ 1x RFID Tag Reader
- ▶ 2x RFID Tag
- ▶ 1x Motion Detector
- ▶ 1x Door-opening Detector
- ▶ Powering adapter
- ▶ Installation accessories

▶ AZK PLUS

- ▶ 3x Motion Detector
- ▶ 2x Door-opening Detector





GSM security camera EYE-02





GSM security camera EYE-02



Activation

Information transmission

Mobile – SMS, MMS, calls
Computer - email
Server – ARC



EYE-02 = monitoring device

- ▶ Camera with night vision
- ▶ GSM communicator also in **3G** version
- ▶ Built-in detectors
- ▶ Radio transmitter and receiver
- ▶ Back-up accumulator
- ▶ Possible to enrol external detectors
 - ▶ Oasis detectors
 - ▶ Up to 20



SIM card is needed for operating. Switch-off PIN.



EYE-02 not-only camera

- ▶ Built-in detectors
 - ▶ Motion detector (PIR)
 - ▶ Glass break detector
 - ▶ In-picture motion in the image detector
 - ▶ Tilting and vibration detector
 - ▶ In-hearing



Tilting and vibration detector – tamper detection of camera



EYE-02 can work with Oasis detectors

JA-83P



JA-83M



RC-86



AC-88

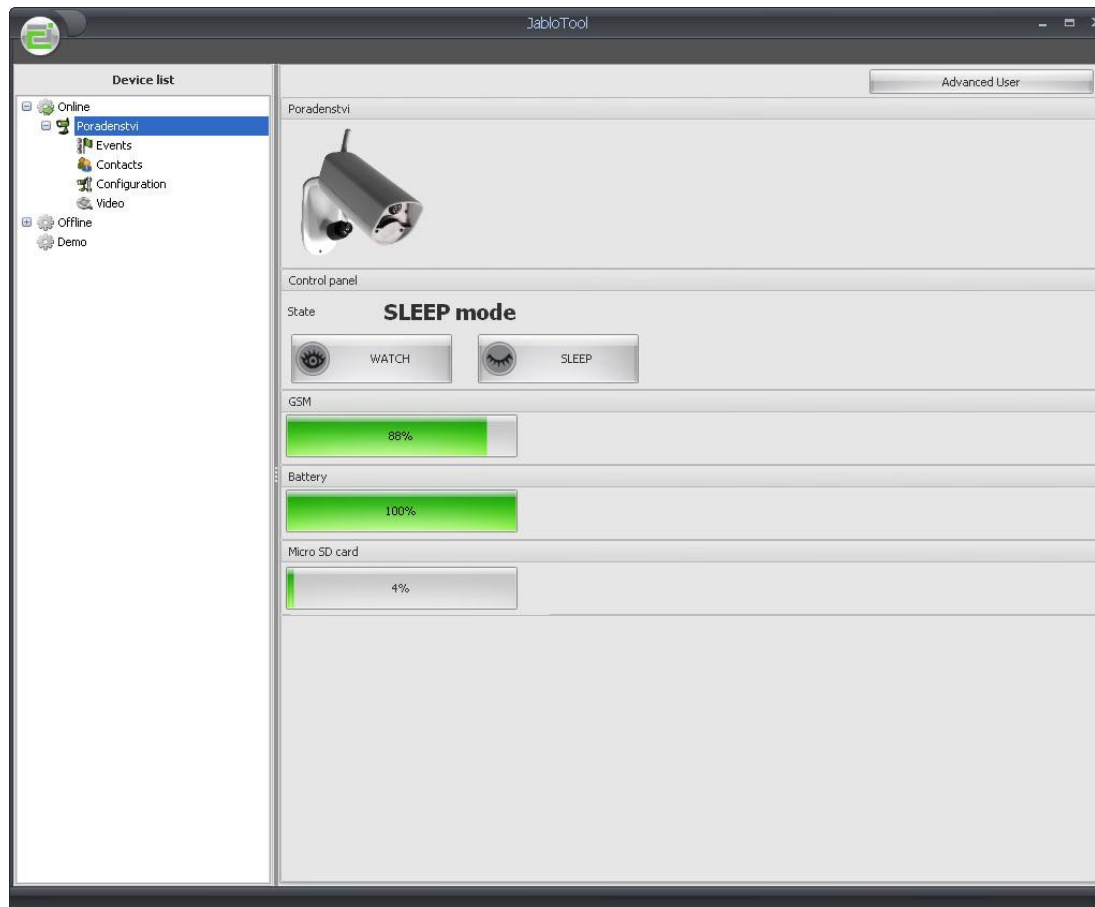


JA-80L





JABLOTOOL – setting via computer





GD-04 David GSM module

► „Tiny but handy“



Backup module



Power adapter



Main unit

building-block-like
modularity



PC connection cable
and GD-Link software



DTMF module

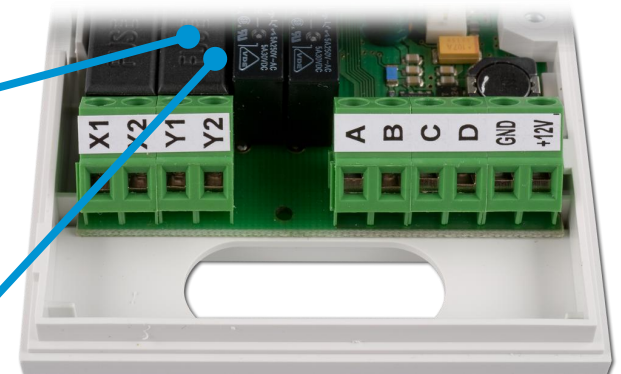


Radio module



Relay operation via a mobile phone:

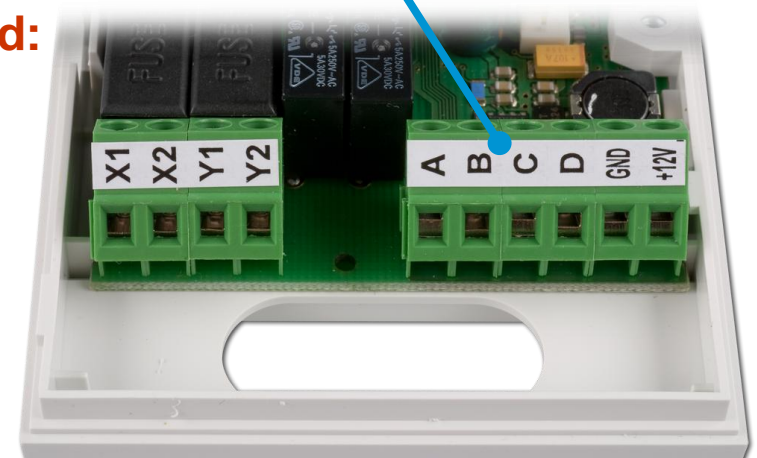
- ▶ **SMS instructions** (of the type ON or OFF)
 - ▶ Instruction text can be edited
 - ▶ Maximum text length is 30 characters
 - ▶ SMS reports can be sent to inform about relay operation
- ▶ **Dialling-in** from an authorized phone
 - ▶ Up to 50 tel. numbers can be programmed for each relay.
 - ▶ The switch-on period after dialling-in is configurable in the range of 1s to 10 hours
 - ▶ Each tel. number can have a limit to the number of calls (useful e.g. at parking-lots)





SMS reports on input activation:

- ▶ **Each of the A to D inputs can have its activation/deactivation reported:**
 - ▶ Up to 8 tel. numbers can be programmed for each input
 - ▶ Maximum report text length is 30 characters
 - ▶ SMS reports can be emphasized by subsequent phone calls
- ▶ **Device input state can be interrogated:**
 - ▶ By the SMS instruction STATUS (editable)





▶ **Via a mobile phone using SMS instructions**

- ▶ Only 8 instructions (texts, numbers, other functions)
- ▶ An instruction starts with an access code (= PC by factory default)
- ▶ Multiple instructions in a single SMS (usually, only one SMS is needed to program the whole configuration)

▶ **Using a PC running GD-Link software**

- ▶ A CD and a USB connection cable supplied with the package

▶ **Via the Jablotron web page**

- ▶ Fill-in a form
- ▶ Send it
- ▶ You get an SMS reply ("PROGRAM OK")
- ▶ Free of charge, no registration needed



Car alarm systems





▶ Car protection

- ▶ Reporting of alarms by SMS or phone calls
- ▶ Remote immobilization via SMS instructions
- ▶ Garage protection using wireless JA-8x detectors
- ▶ Listening-in to the car using an HF-03 hands free set (optional)
- ▶ Remote control: key-fob, phone or the Internet



▶ Logistics support

- ▶ Car navigation – via a Bluetooth connection to a PDA or to a mobile phone
- ▶ Monitoring car use (location) via the Internet (suitable for monitoring work journeys)

▶ Additional features

- ▶ Operating car appliances
- ▶ Hands-free calling from the car using an HF-03
- ▶ ARC supervision



GSMLink car location monitoring **JABLOTRON** CREATING ALARMS

Mapy.cz: vyhledávání výrazu 50° 43,706' 15" 11,107' - Firefox

Soubor Úpravy Zobrazit Přejít Záložky Nástroje Nápověda

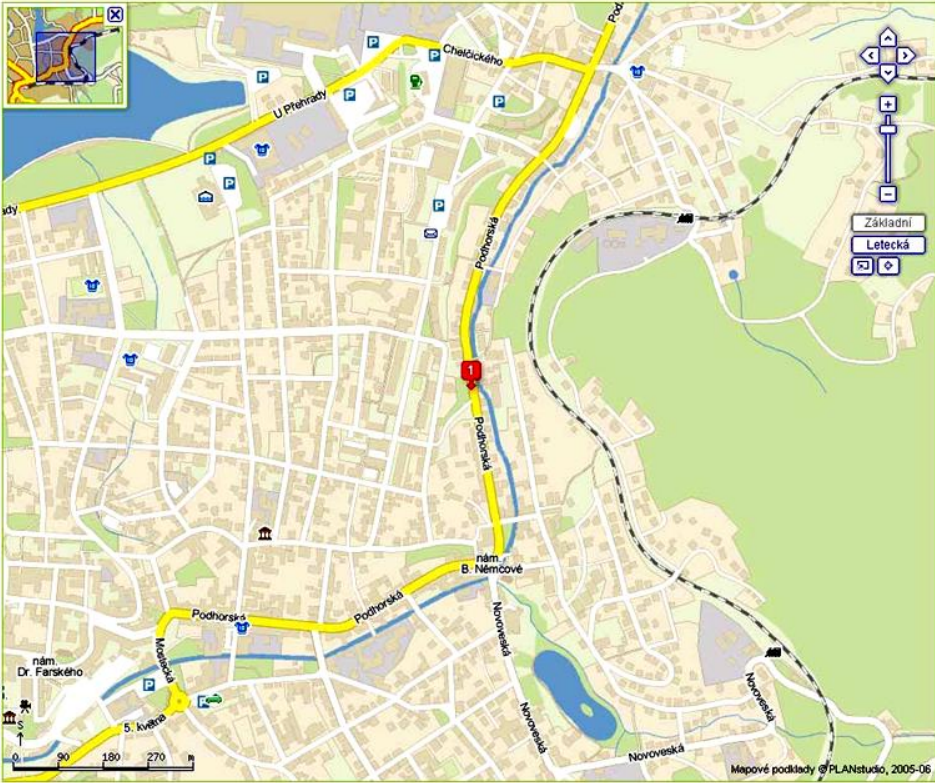
http://www.mapy.cz/?query=50%C2%B0%2043,706'%2015%C2%B0%2011,107%'&portWidth=938&portHeight=... Přejít

IAP / Jablotron IS

Internet Firmy **Mapy** Zboží Encyklopedie [Vytiskni](#) [Další funkce](#) [Seznam](#)

MAPY.CZ 50° 43,706' 15" 11,107' [Jak přidat firmu na mapy.cz?](#)

Zadejte ulici, město, adresu nebo firmu. [Příklady](#) - [Nápověda](#)



Plánovač tras [Najdi nejbližší](#) [Dopravní informace](#)

Zobrazují 1 z 1 nalezených.

1 50°43'42.36"N 15°11'6.42"E

[Novinky na Mapy.cz](#)
Copyright © 1996 - 2006 Seznam.cz, a.s.
Změřeni adres: ČSU
[Seznam](#) - [Nápověda](#) - [Připomínky](#)

Mapové podklady © PLANstudio, 2005-06

Přenáším data z mapserver.mapy.cz...